

MONTHLY MEMBERSHIP PROGRESS REPORT

LOCATION INDIA

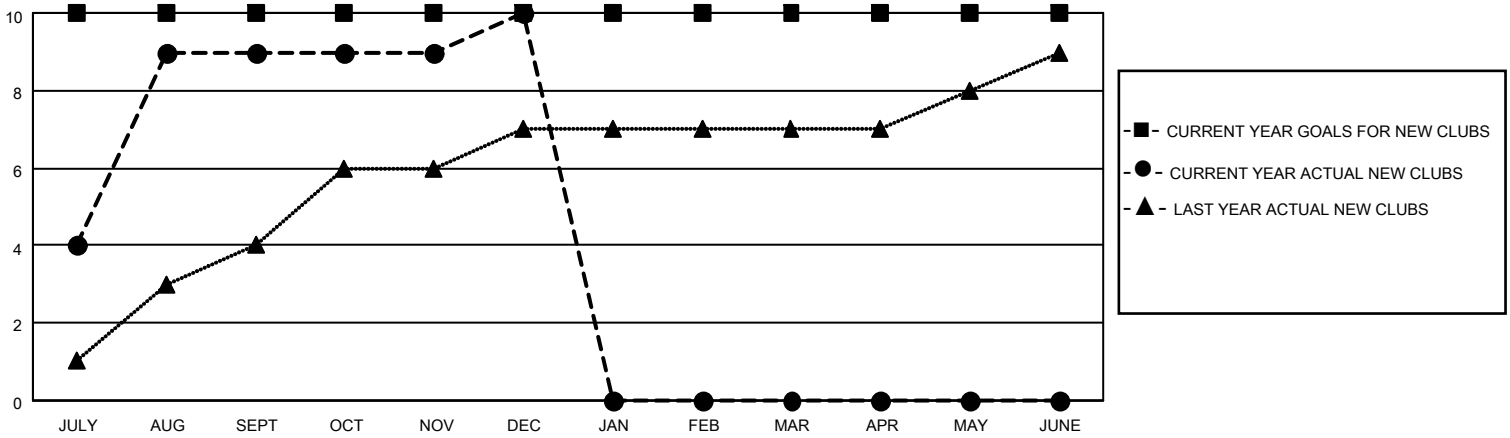
District 322C1

Results as of: 12/31/2022

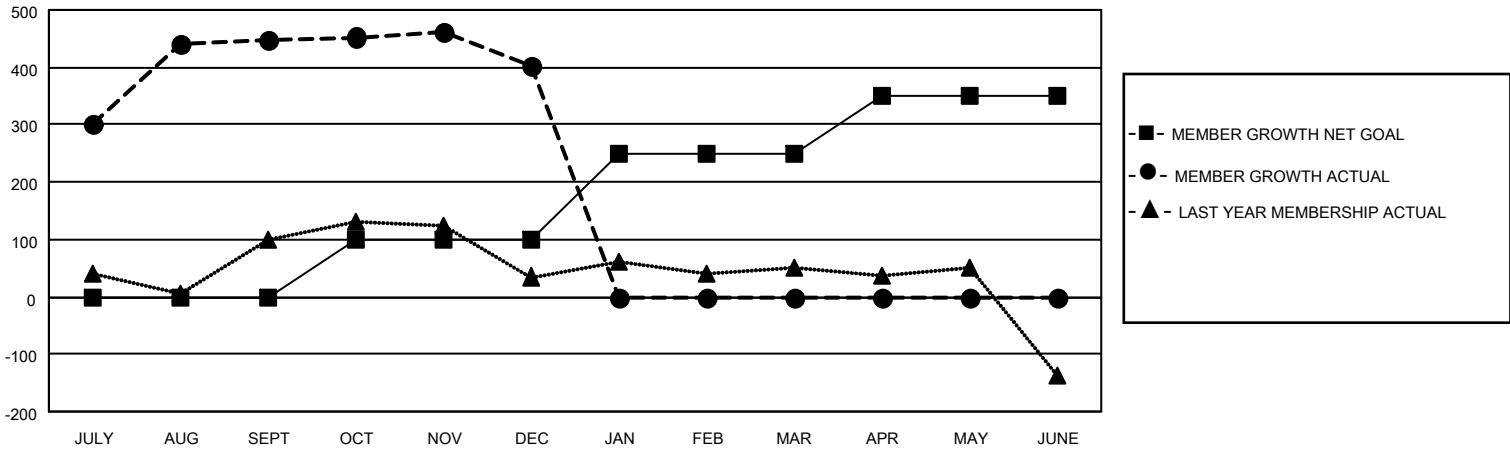
Clubs			
RESULTS FOR 2022-2023			
QUARTER	NEW CLUB GOAL	NEW CLUBS	DROPPED CLUBS
JULY/AUG/SEPT	10	9	1
OCT/NOV/DEC	0	1	6
JAN/FEB/MAR	0	0	0
APR/MAY/JUNE	0	0	0

Members			
RESULTS FOR 2022-2023			
QUARTER	MEMBER GROWTH NET GOAL	MEMBER GROWTH ACTUAL	DROPPED MEMBERS ACTUAL (including transfers)
JULY/AUG/SEPT	0	490	36
OCT/NOV/DEC	100	258	290
JAN/FEB/MAR	150	0	0
APR/MAY/JUNE	100	0	0

GOALS AND ACTUAL NEW CLUBS CUMULATIVE



GOALS AND ACTUAL MEMBERS CUMULATIVE



DROPPED CLUBS: 7

82 CLUBS OF 123 ADDED 1 OR MORE NEW MEMBERS

GENDER DISTRIBUTION

MALE	2,845 (74.97%)
FEMALE	950 (25.03%)
NON BINARY	0 (0.00%)
PREFER NOT TO ANSWER	0 (0.00%)

DROPPED MEMBERS

[CLICK HERE FOR CUMULATIVE MEMBERSHIP DATA](#)

DECEASED	12
CLUB CANCELLED	123
OTHER	191
TOTAL	326

TOTAL FAMILY UNIT MEMBERS 1,932

FAMILY MEMBERS PAYING HALF DUES 1,142